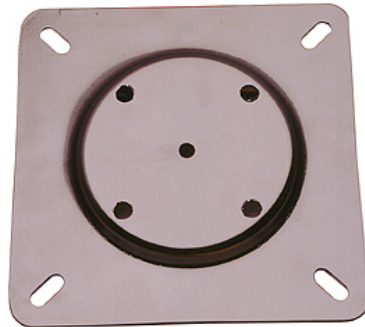
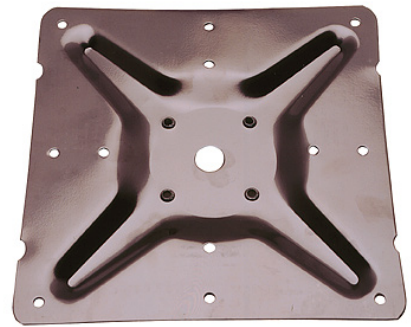


TABLE PLATES



Part #160416



Part #160409

7"x7" Square Table Plate: Four $\frac{5}{16}$ " mounting holes with standard clearance for assembly. Available in 12-gauge steel. Used for tables with a table top up to 36" wide.

11"x11" Square Table Plate: Eight $\frac{5}{16}$ " mounting holes with standard clearance holes for assembly. Available in 9-gauge steel. Used for tables with a table top up to 48" wide.

Part #	Description	Weight Per Unit	Pieces Per Box	Total Weight Per Box
160416	PL 712 FL ADAPTOR CH25 NF	1.3	36	47
160409	PL 11X11 9GA TABLE NF	5.24	250	1,350

Contact Us:
773-284-6600
WWW.TRENDLER.COM